

4.0 PROPOSED MATERIALS

4.1 Fibre Cement Weatherboard Plank

It is proposed to remove the existing Thermowood battens and replace with HardiePlank - a smooth factory finished fibre cement tongue and grooved plank. The manufacturer claims that HardiePlank[®] has the highest non-combustible rating in the UK for a coloured cladding product (A2, s1-d0), and the product has been extensively fire tested under the 13501-1 suite of fire tests for CE compliance, and is proven to not contribute to the spread of fire.

This material has been selected as a material that will best replicate the look and feel of the original cladding design, whilst providing a non-combustible alternative to timber cladding. The HardiePlank[®] ship lap installation is installed at 150mm spacings, (allowing for overlap of the planks). This replicates the hit and miss horizontal rhythm of the existing 45mm Thermowood timber batten installation. The product provides a ventilated rain screen cladding, which is suitable for installing as a external cladding, window reveals and soffit linings to car ports, porches and overhangs. The panels are to be secret-fixed using mechanical fixings. A vertical fixing method is proposed for the TR house types.

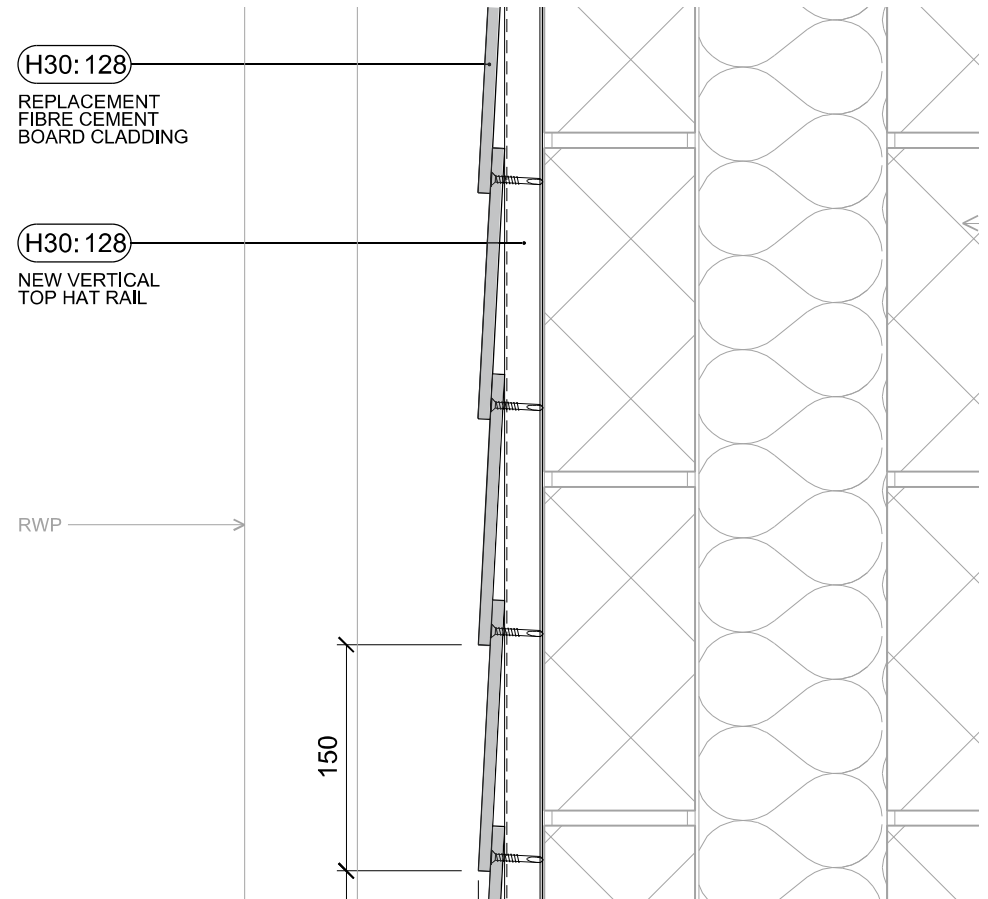
The HardiePlank[®] product is supported by range of aluminium trims and corner beads. The proposed colour for the HardiePlank[®] material is Anthracite Grey for all homes on the estate, in order to complement the existing buff brick and grey brick colour palettes of the homes and best replicate the look and feel of the current exterior weathered timber and maintain the visual consistency across the estate. The panels will have a smooth finish (not textured).



HardiePlank[®] vertical installation (finish not representative of selection)



HardiePlank[®] horizontal installation (finish not representative)



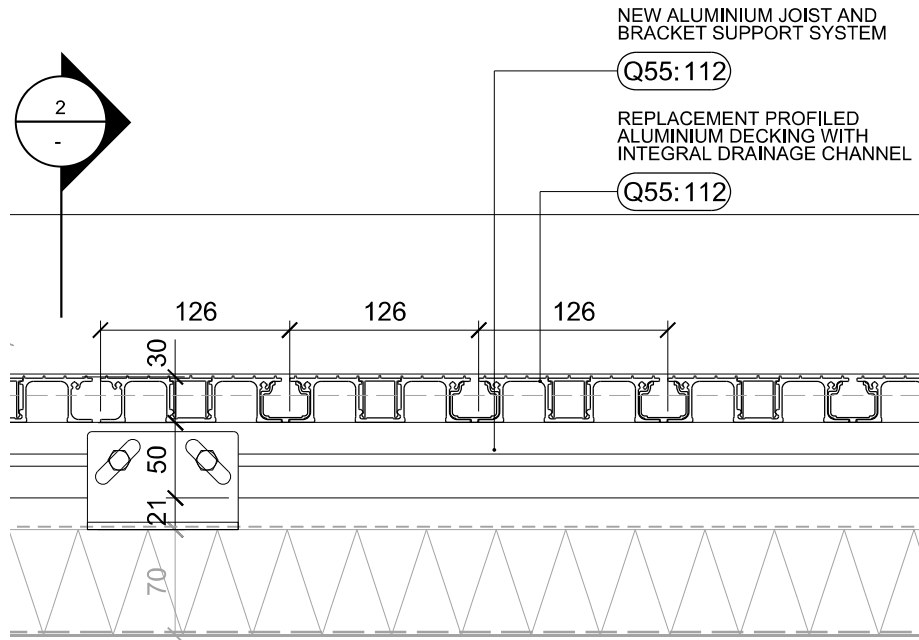
Section Detail illustrating HardiePlank[®] horizontal installation to houses

4.2 Extruded Aluminium Balcony Decking

For homes that have a balcony, the balcony decking can be re-clad by removing the current 45mm Thermowood battens and replacing them with an extruded Aluminium decking system. The decking planks are fixed to proprietary aluminium joists and contain integrated drainage channels, to drain the rainwater from the decking surface.

The decking replacement can be achieved without having to remove the balcony or do any modifications to the structure of the balcony, to reduce disruption to the residents during the works.

The surface finish of the decking is powder coated and the ridges or grooves provide a non-slip finish. The colour selected for the decking is Silver Grey, as it complements the existing buff brick and grey brick colour palettes of the homes. The existing glass balustrading and handrail is retained.



Detail illustrating Aluminium decking board system for terraces to houses

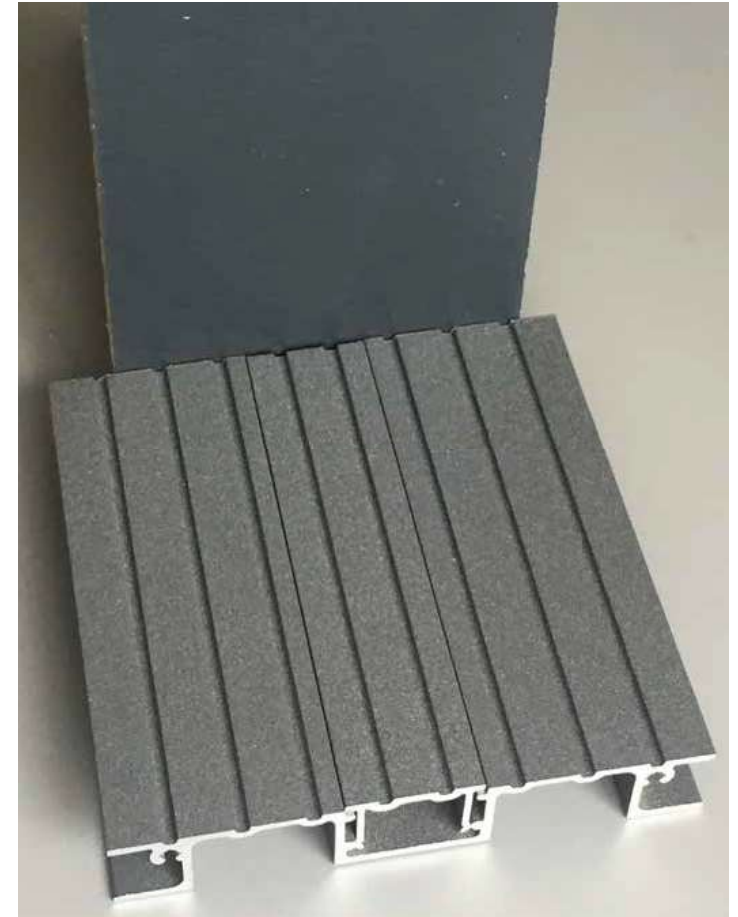
Product Samples:

Hardie Plank external cladding:
HardiePlank® Smooth, finish fibre cement plank

Colour: Anthracite Grey

Powder coated extruded
Aluminium balcony decking.

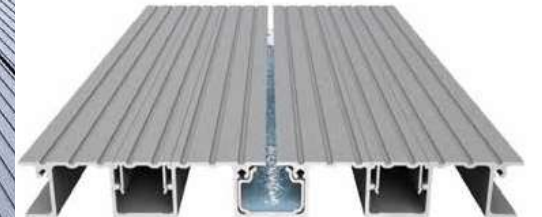
Colour: Silver grey



HardiePlank® cladding & Aluminium balcony decking samples



Aluminium decking board system installed example

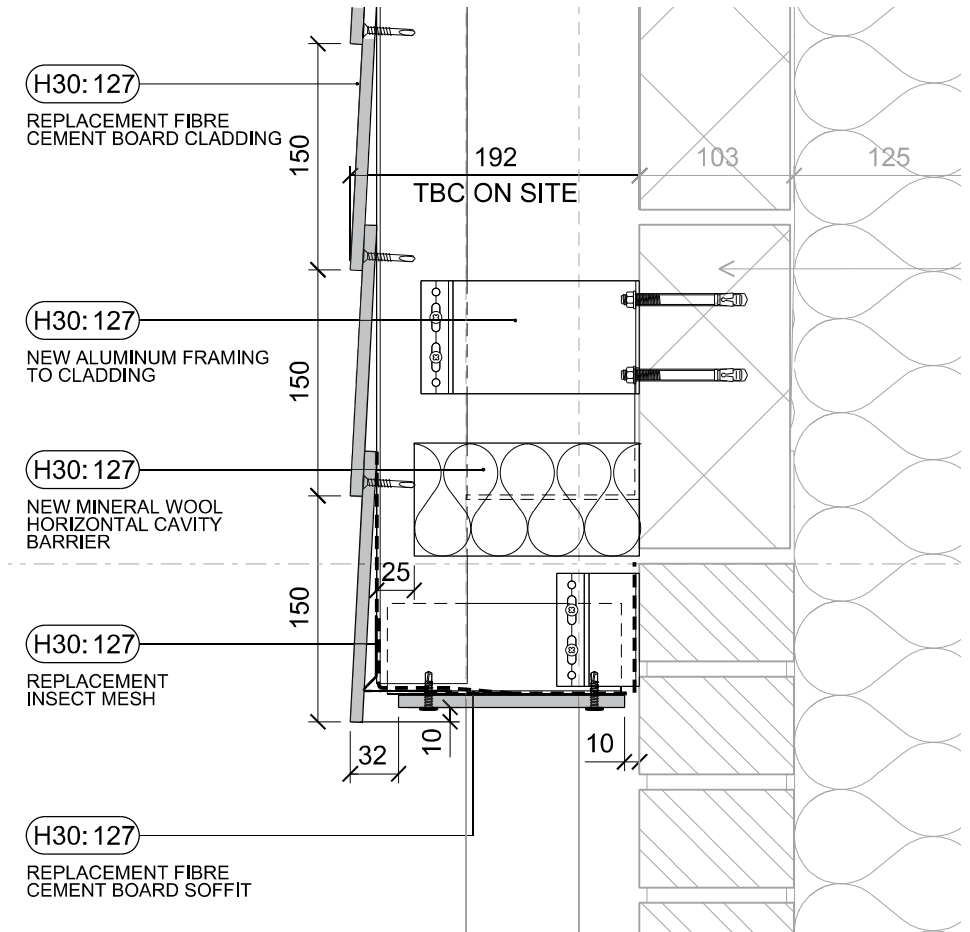


Powder coated aluminium decking board system with drainage channel

4.3 Typical Section Details



Photograph illustrating HardiePlank® horizontal installation with soffit cladding



Section Detail illustrating HardiePlank® horizontal installation with soffit cladding at junction with Brick Base

4.5 Sample Of Existing & Proposed Elevations : Type BL



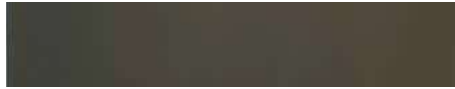
Existing Elevation illustrating 'hit and miss' horizontal Thermowood timber batten cladding.



Proposed Elevation illustrating HardiePlank horizontal cladding

5.0 PROPOSED COLOUR PALETTE 1 (GREY BRICK)

5.1 Proposed Colour Palette 1 (Grey Brick)



- **Slate Pitched roofs:**
Marley Eternit
- **Colour:** Black Thrutone



- **Hardie Plank external cladding:** Smooth, factory finished fibre cement plank, secret-fixed.
- **Colour:** Anthracite Grey

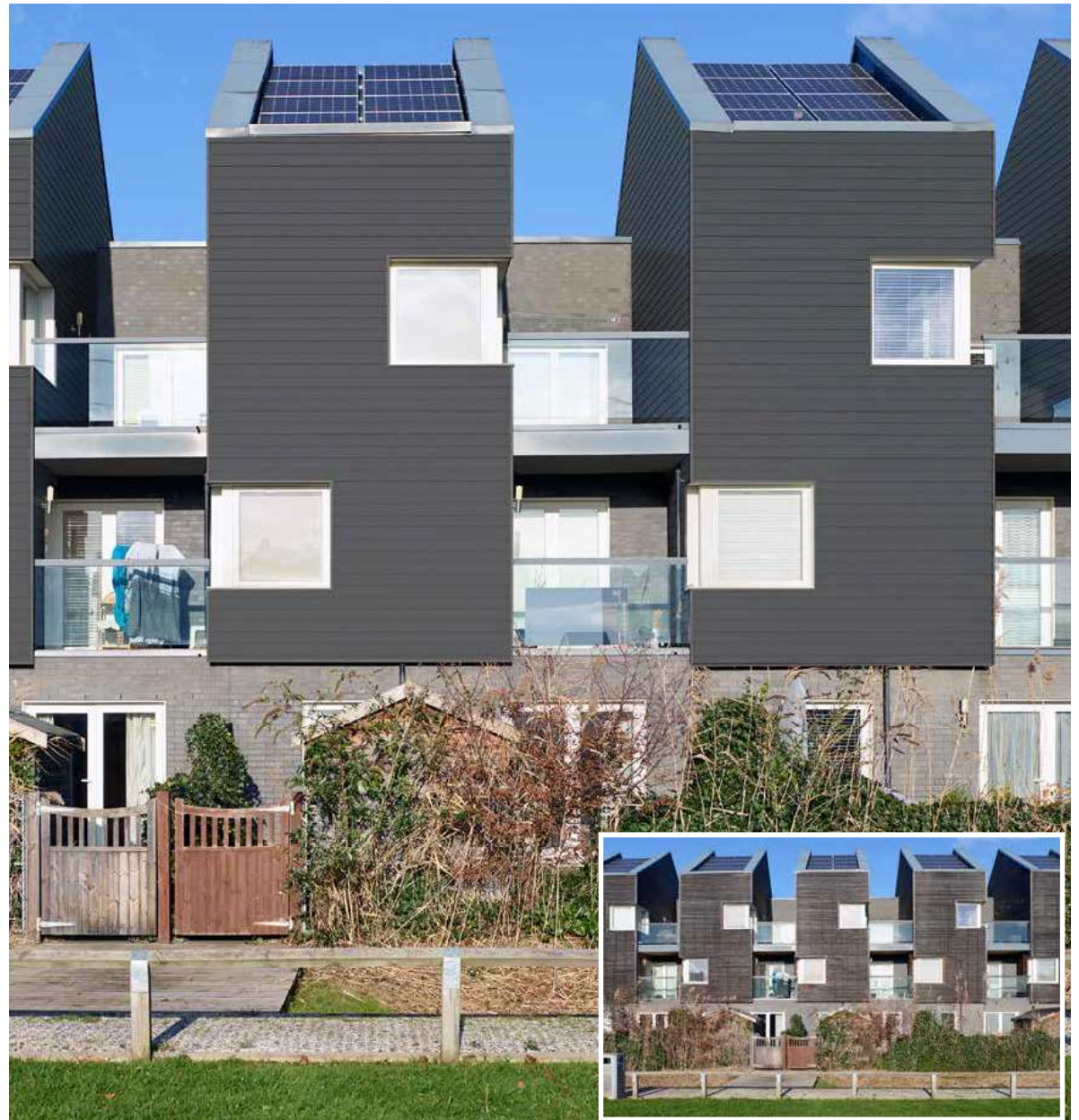


- **Painted double glazed timber framed windows:**
- **Colour:** White RAL 9010.

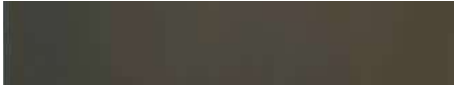


- **Dark Grey Concrete Facing Brick:** Edenhall Buxworth Blue Smooth
- **Painted timber doors:**
- **Colours:**
Sun Yellow RAL 1037,
Yellow Orange RAL 2000,
Ochre Brown RAL 8001

It is proposed to install a single colour of Hardie Plank across all house types and all Phases in order to maintain the coherent streetscape of the original timber battens.



5.2 Proposed Colour Palette 2 (Buff Brick)



- **Slate Pitched roofs:** Marley Eternit
- **Colour:** Black Thrutone



- **Hardie Plank external cladding:** Smooth, factory finished fibre cement plank, secret-fixed.
- **Colour:** Anthracite Grey



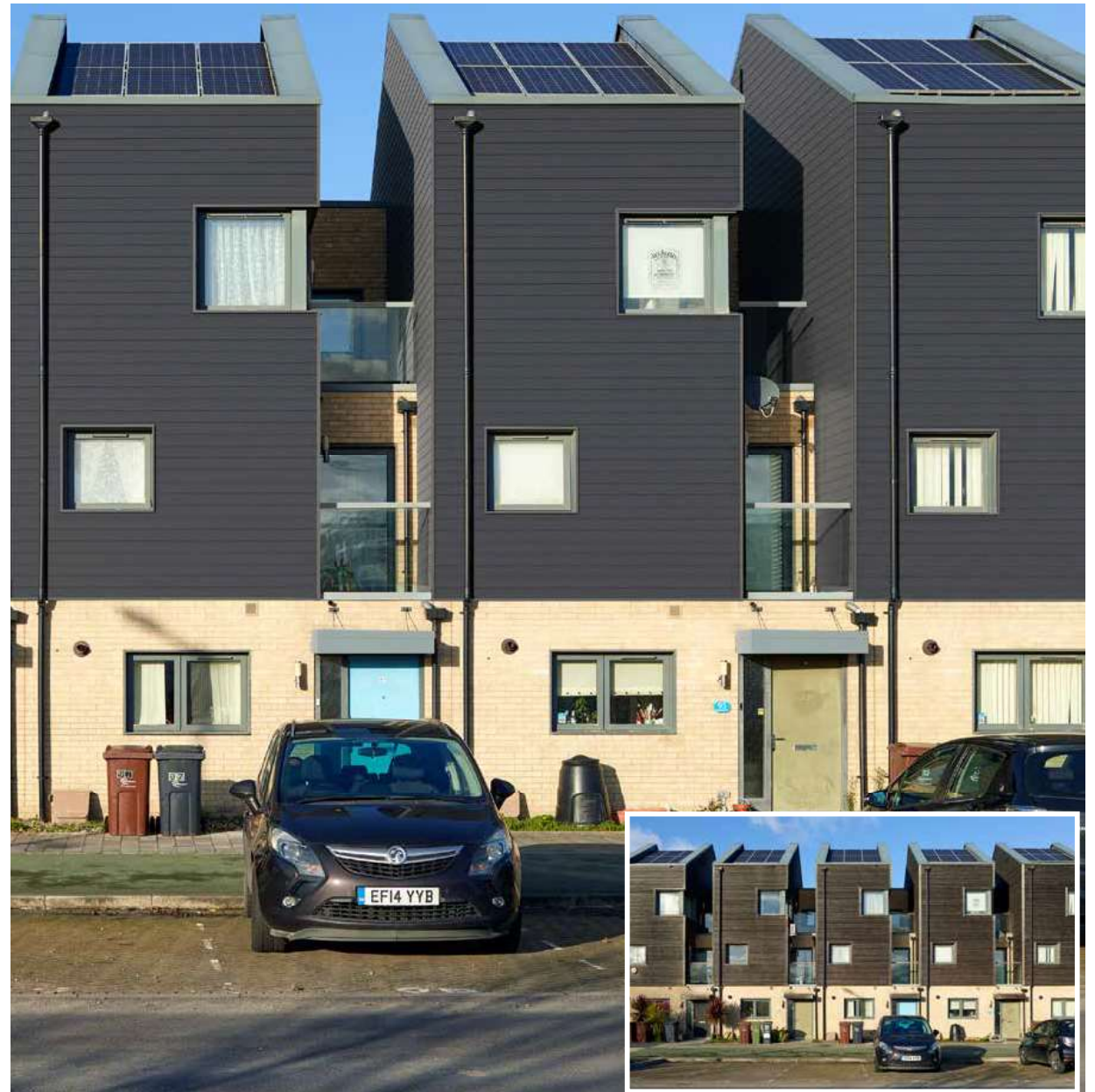
- **Painted double glazed timber framed windows:**
- **Colour:** Basalt grey RAL 7012.



- **Buff Concrete Facing Brick:** Edenhall Lea Valley Sand

- **Painted timber doors:**
- **Colours:** Sun Yellow RAL 1037, Yellow Orange RAL 2000, Ochre Brown RAL 8001

It is proposed to install a single colour of Hardie Plank across all house types and all Phases in order to maintain the coherent streetscape of the original timber battens.



5.3 Proposed Colour Palette 2 (Grey Brick) | House Types BBF, BL & TR

